



**PSA STANDARDS
PSA STANDARTLARI
PSA NORMALIEN**

1

INDEX
İNDEKS
STICHWORTVERZEICHNIS

2

LIFTING ELEMENTS
TAŞIMA ELEMANLARI
TRAGELEMENTE

3

GUIDE ELEMENTS
KILAVUZ ELEMANLARI
FÜHRUNGSELEMENTE

4

DIE COMPONENTS
KALIP ELEMANLARI
NORMALIEN

5

BMW STANDARDS
BMW STANDARTLARI
BMW NORMALIEN

6

FCA STANDARDS
FCA STANDARTLARI
FCA NORMALIEN

7

FORD STANDARDS
FORD STANDARTLARI
FORD NORMALIEN

8

MERCEDES-BENZ STANDARDS
MERCEDES-BENZ STANDARTLARI
MERCEDES-BENZ NORMALIEN

9

OPEL STANDARDS
OPEL STANDARTLARI
OPEL NORMALIEN

10

PSA STANDARDS
PSA STANDARTLARI
PSA NORMALIEN

11

RENAULT STANDARDS
RENAULT STANDARTLARI
RENAULT NORMALIEN

12

VW - AUDI STANDARDS
VW - AUDI STANDARTLARI
VW - AUDI NORMALIEN

13

SPRINGS
YAYLAR
FEDERN




14

OTHER COMPONENTS
DİĞER MALZEMELER
ANDERE KOMPONENTE

15

TECHNICAL DATA
TEKNİK BİLGİ
TECHNISCHE INFORMATIONEN

Index

Contents	Page	Contents	Page
 <p>E24.51.930.G Balance Block Dengeleme Bloğu Distanzstück</p>	10.7	 <p>E24.52.105.G Toe Clamp Burç Tutucu Haltestück</p>	10.10
 <p>E24.51.930.G Stop Block Stoplama Bloğu Abstandsblock</p>	10.7	 <p>E24.52.105.G Guide Bushes with collar, self-lubricating Faturalı Grafitli Kılavuz Burçlar Führungsbuchsen mit Bund</p>	10.11
 <p>E24.52.105.G Guide Post Kılavuz Kolonlar Führungssäule</p>	10.8	 <p>E24.52.105.G Toe Clamp Burç Tutucu Haltestück</p>	10.11
 <p>E24.52.105.G Flange for Median Retaining Column Kolon Tutucu Flaşlar Haltestück für Führungssäule</p>	10.8	 <p>E24.52.305.G Toe Clamp Burç Tutucu Haltestück</p>	10.11
 <p>E24.52.105.G Flange for Median Retaining Bushes Kolon Tutucu Flaşlar Haltestück für Führungssäule</p>	10.9	 <p>E24.52.504.G Wear Plates with Oil Groove Yağlama Kanallı Çelik Kılavuz Plakalar Gleitplatten, Stahl mit Ölschmiernut</p>	10.12
 <p>E24.52.105.G Guide Bushes with collar, self-lubricating Faturalı Grafitli Kılavuz Burçlar Führungsbuchsen mit Bund</p>	10.9	 <p>E24.52.504.G Wear Plates, self-lubricating Grafitli Bronz Kılavuz Plakalar Gleitplatte Bronze mit Festschmierstoff</p>	10.13
 <p>E24.52.105.G Guide Post Kılavuz Kolonlar Führungssäule</p>	10.10	 <p>E24.52.504.G Wear Plates, self-lubricating VDI 3357 Grafitli Bronz Kılavuz Plakalar VDI 3357 Gleitplatte Bronze mit Festschmierstoff VDI 3357</p>	10.14











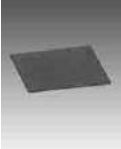
Index

Contents	Page	Contents	Page
 <p>E24.52.504.G Wear Plates, steel VDI 3357 Çelik Kılavuz Plakalar VDI 3357 Gleitplatte Stahl VDI 3357</p>	10.15	 <p>E24.52.512.G Wear Plates with Oil Groove Yağlama Kanallı Çelik Kılavuz Plakalar Gleitplatten, Stahl mit Ölschmiernut</p>	10.22
 <p>E24.52.504.G Wear Plates, self-lubricating VDI 3357 Grafitli Bronz Kılavuz Plakalar VDI 3357 Gleitplatte Bronze mit Festschmierstoff VDI 3357</p>	10.16	 <p>E24.52.512.G "V" Driver, steel Çelik Kılavuz "V" Plakalar Prismenführung, Stahl</p>	10.23
 <p>E24.52.504.G Wear Plates, steel VDI 3357 Grafitli Çelik Kılavuz Plakalar VDI 3357 Gleitplatte Stahl VDI 3357</p>	10.17	 <p>E24.52.512.G Angular Slide Plates, steel and oil groove Yağlama Kanallı Çelik Kılavuz Plakalar Prismenführung, Stahl mit Ölschmiernut</p>	10.24
 <p>E24.52.512.G Wear Plates with Oil Groove Yağlama Kanallı Çelik Kılavuz Plakalar Gleitplatten, Stahl mit Ölschmiernut</p>	10.18	 <p>E24.52.512.G Angular Slide Plates, steel and oil groove Yağlama Kanallı Çelik Kılavuz Plakalar Prismenführung, Stahl mit Ölschmiernut</p>	10.25
 <p>E24.52.512.G Wear Plates with Oil Groove Yağlama Kanallı Çelik Kılavuz Plakalar Gleitplatten, Stahl mit Ölschmiernut</p>	10.19	 <p>E24.52.512.G Wear Plates, steel Çelik Kılavuz Plakalar Gleitplatte, Stahl</p>	10.26
 <p>E24.52.512.G Wear Plates with Oil Groove Yağlama Kanallı Çelik Kılavuz Plakalar Gleitplatten, Stahl mit Ölschmiernut</p>	10.20	 <p>E24.52.535.G "V" Driver, self-lubricating Bronz Grafitli "V" Bloklar Prismenführungen Bronze mit Festschmierstoff</p>	10.27
 <p>E24.52.512.G Wear Plates with Oil Groove Yağlama Kanallı Çelik Kılavuz Plakalar Gleitplatten, Stahl mit Ölschmiernut</p>	10.21	 <p>E24.52.535.G "V" Driver, steel "V" Bloklar, çelik Prismenführung, stahl</p>	10.28

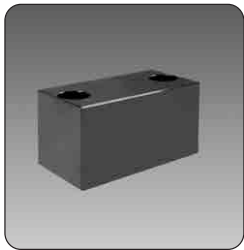
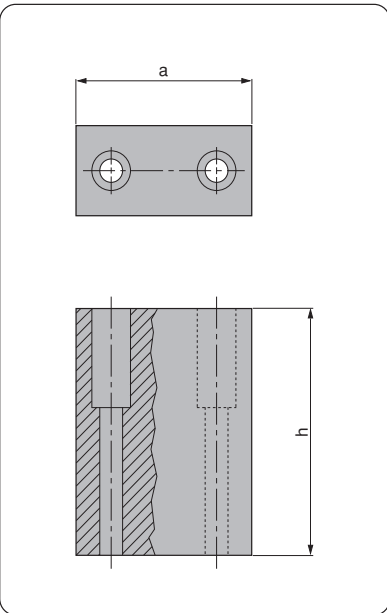
Index

Contents	Page	Contents	Page
 <p>E24.52.535.G Angular Slide Plates, steel Çelik Kılavuz Plakalar Prismenführung, stahl</p>	10.29	 <p>E24.54.420.G Elastomer Cap Poliüretan Tıpa Elastomerdruckstück</p>	10.34
 <p>E24.52.535.G Angular Slide Plates, self-lubricating Grafitli Bronz Kılavuz Plakalar Prismenführung, Bronze mit Festschmierstoff</p>	10.30	 <p>E24.54.445.G Elastomer Springs Poliüretan Yaylar Elastomerfeder</p>	10.35
 <p>E24.52.535.G Wear Plates, self-lubricating Grafitli Bronz Kılavuz Plakalar Gleitplatte Bronze mit Festschmierstoff</p>	10.31	 <p>E24.54.445.G Plastic Stripper for Blanking Dies Elastomer Sıyırıcılar Abstreifer für Platinenschnitte</p>	10.35
 <p>E24.52.540.G Distance Plates, steel Çelik Altık Plakaları Höhenausgleich für Gleiplatte</p>	10.32	 <p>E24.55.265.G Shock Absorber for Pad Retainer Pins Emniyet Pimleri İçin Amortisör Vulkolonlar Halteelement</p>	10.36
 <p>E24.53.920.G Punch Stripper Zimba Sıyırıcılar Präzisions Abstreifer</p>	10.33	 <p>E24.55.265.G Pad Retainer Pins Emniyet Pimleri Steckbolzen</p>	10.36
 <p>E24.54.410.G Elastomer Springs Poliüretan Yaylar Elastomerfeder</p>	10.33	 <p>E24.55.410.G Spring Spacer Units Stoplama Civataları Retainer Bolt</p>	10.37
 <p>E24.54.410.G Pin for Elastomer Springs Elastomer Yaylar İçin Sabitleme Pimleri Aufnahmebolzen</p>	10.34	 <p>E24.56.200.G Gage Mekanik Dayamalar Einweiser</p>	10.37

Index

Contents	Page	Contents	Page
 <p>E24.56.630.G Kama Key Passfeder</p>	10.38	 <p>E24.64.100.G Stamp Retainer Zimba Tutucu Halteplatte</p>	10.42
 <p>E24.56.700.G Locating Cone Konik Merkezleme Üniteleri Kegeldistanz</p>	10.39	 <p>E24.64.100.G Backing Plate Zimba Destek Plakası Druck Platte</p>	10.42
 <p>E24.57.370.G Sleeve Bilyalı Yatak Führungseinheit</p>	10.39	 <p>E24.64.105.G Visual Locator Punch Konum İz Zımbası Endkontrolstempel</p>	10.43
 <p>E24.57.370.G Coupling Clamp Sabitleme Kelepçeleri Befestigungselement</p>	10.40	 <p>E24.65.000.G Lifting Pins Taşıma Milleri Tragbolzen Mit Fallringsicherung</p>	10.43
 <p>E24.57.370.G Guide Post Kılavuz Pim Führungssäule</p>	10.40		
 <p>E24.57.370.G Bracket Braket Halterung</p>	10.41		
 <p>E24.57.900.G Stainless Steel Embossed Sheet Kabartmalı Çapak Kaydırma Plakası Geprägt Scheiße</p>	10.41		

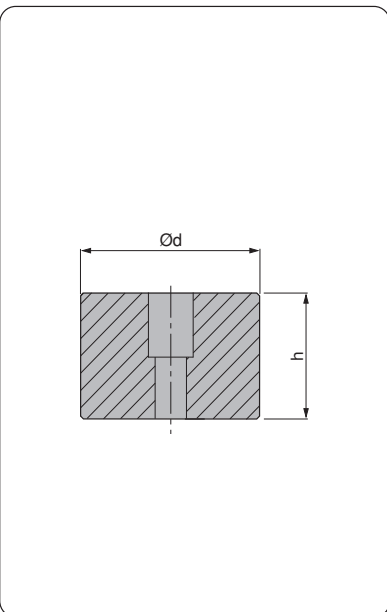
PSA Code	a	h
A 699 101 605	80	55
A 699 101 804	110	55
J 859 912 001	80	101
J 856 750 087	110	137



Material :
CK45

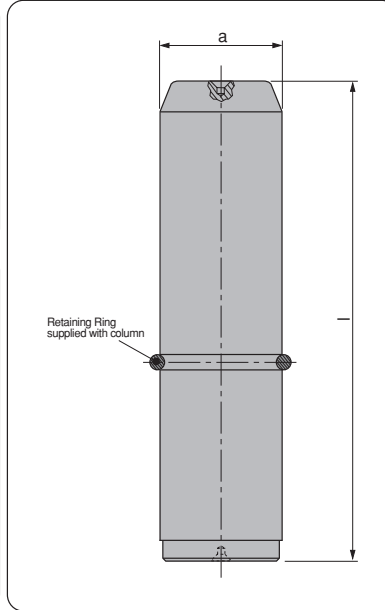
PSA CODE: E24.51.930.G

PSA Code	d	h
N 001 107 801	40	20
N 001 107 798	70	30



Material :
25CrMo4

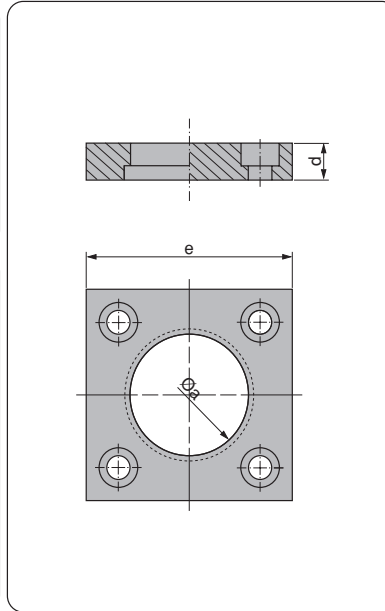
PSA CODE: E24.51.930.G



PSA Code	a	l
Z 000 115 378	25	100
Z 000 495 749	25	125
Z 000 306 386	32	125
Z 000 325 846	32	220
P 446 117 470	40	180
P 446 117 401	40	200
P 446 117 476	40	220
P 446 118 170	50	220
P 446 118 174	50	250
P 446 118 101	50	280
P 446 118 701	63	250
P 446 118 702	63	315
P 446 119 200	80	315
P 446 119 270	80	355

Material :
CK45
Surface hardened.

PSA CODE:E24.52.105.G

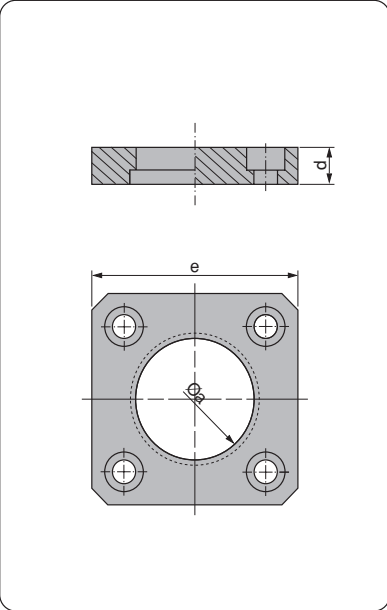


PSA Code	a	d	e
Z 000 248 844	25	10	45
P 446 932 711	32	10	56
P 446 932 701	40	12	70
P 446 932 702	50	14	80
P 446 932 703	63	18	100
P 446 932 704	80	20	110

Material :
CK45

PSA CODE:E24.52.105.G

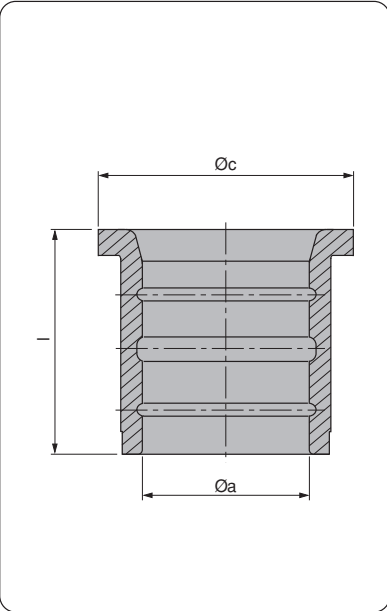
PSA Code	a	c	d
P 446 932 719	50	75	12
P 446 932 720	60	85	16
P 446 932 721	80	100	16
P 446 932 722	100	117	20



Material :
CK45

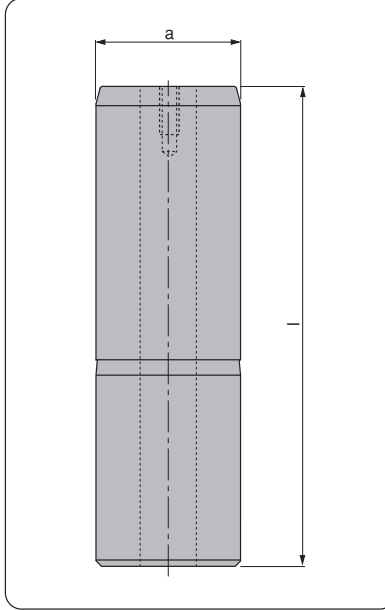
PSA CODE: E24.52.105.G

PSA Code	a	c	l
P 405 336 470	20	32	32
P 406 107 070	25	40	40
P 406 827 770	32	50	50
P 407 508 271	40	60	63
P 408 178 770	50	71	80
P 408 749 371	63	90	100
P 409 309 872	80	112	125



Material :
Bronze
HB ≥ 190

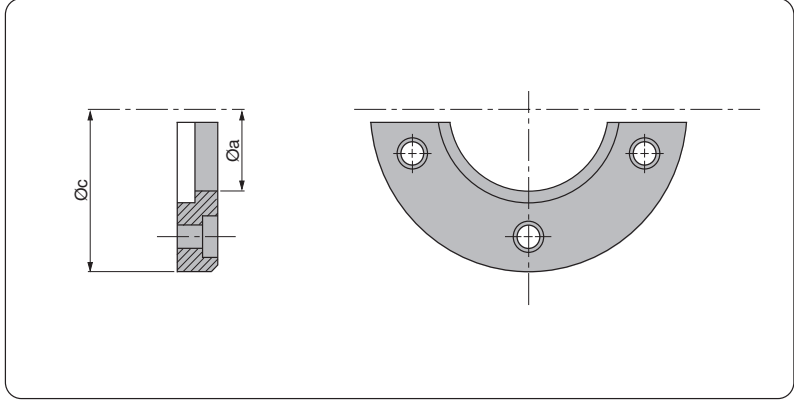
PSA CODE: E24.52.105.G



PSA Code	a	l
N 000 622 562	100	280
N 000 829 460	100	250
Z 000 508 424	100	315
Z 000 499 647	100	355
Z 000 508 422	100	400
N 000 643 539	125	315
N 000 527 148	125	355
Z 000 499 648	125	400
Z 000 508 423	125	450

Material :
CK45
Surface hardened.

PSA CODE:E24.52.105.G

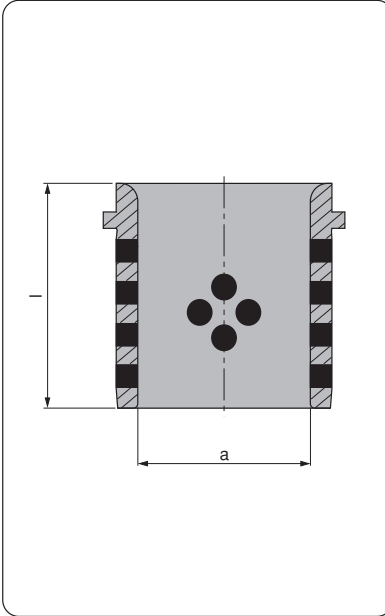


Material :
CK45

PSA Code	Guide Post Ø	a	c
Z 000 289 474	25	32	72
P 446 932 717	32	40	80

PSA CODE:E24.52.105.G

PSA Code	a	l
Z 000 499 644	100	125
Z 000 499 646	125	160

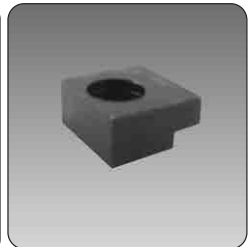
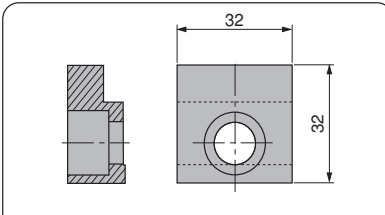


Material :
Bronze with Non-Liquid Lubricant
HB ≥ 190

Direction of Motion

PSA CODE:E24.52.105.G

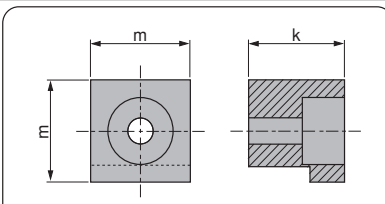
PSA Code
Z 000 263 005



Material
1.0503 (C45)

PSA CODE:E24.52.105.G

PSA Code	k	m
P 446 932 706	9	18
P 446 932 708	11	22
P 446 932 709	18	26

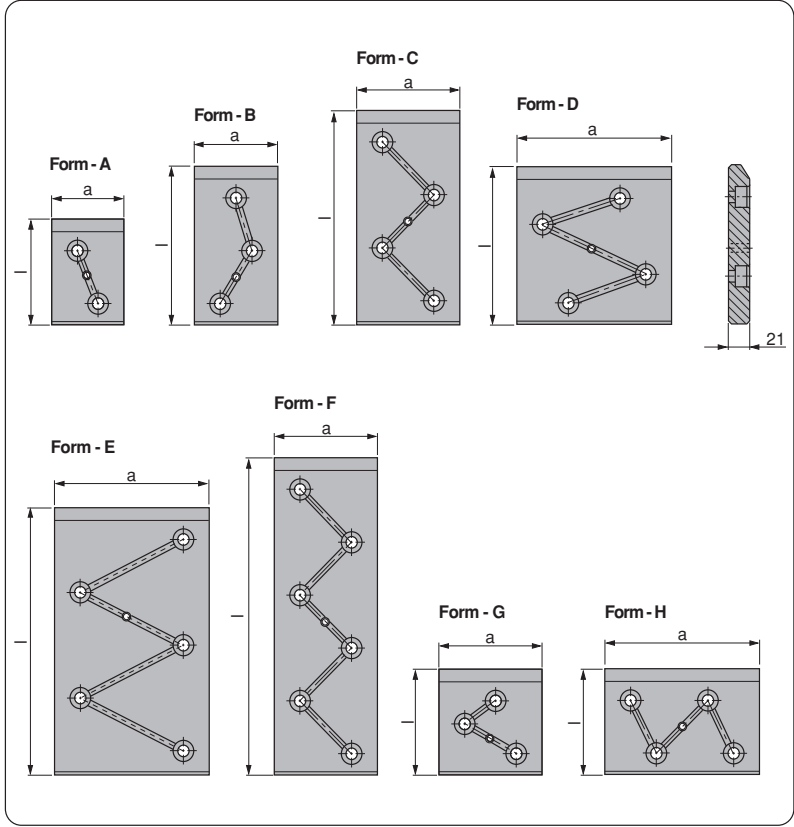


Material
1.0503 (C45)

PSA CODE:E24.52.305.G

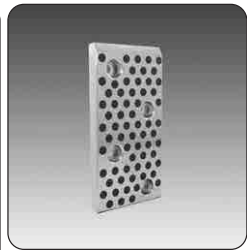
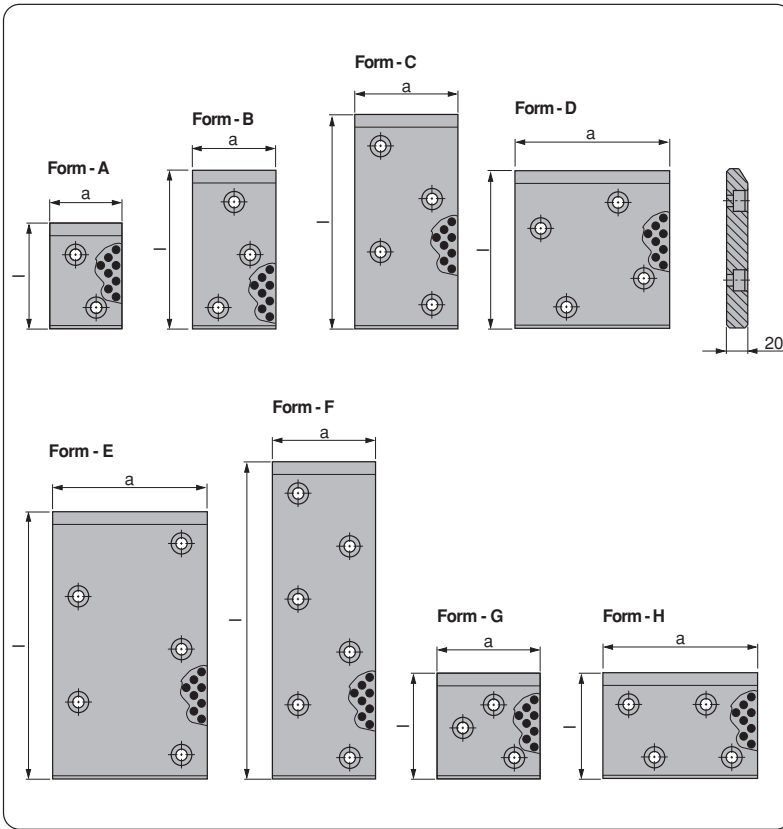


Material :
18NiCr5-4
Hardened
HRC 58 ÷ 60



PSA CODE: E24.52.504.G

PSA Code	Form	a	l
Z 000 166 213	A	70	100
P 446 626 558	B	70	150
P 446 627 059	C	70	200
P 446 625 855	G	100	100
P 446 626 559	C	100	150
P 446 627 060	C	100	200
P 446 627 454	E	100	250
P 446 627 754	F	100	300
P 446 626 560	H	150	100
P 446 626 561	D	150	150
P 446 627 061	C	150	200
P 446 627 455	E	150	250
P 446 627 755	F	150	300
Z 000 166 220	H	200	100



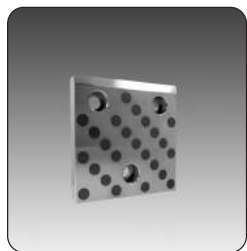
Material :
Bronze with Non-Liquid Lubricant
HB ≥ 190

Direction of Motion



PSA CODE: E24.52.504.G

PSA Code	Form	a	l
Z 000 166 214	A	70	100
Z 000 166 216	B	70	150
Z 000 166 221	C	70	200
Z 000 166 215	G	100	100
Z 000 166 217	C	100	150
Z 000 166 222	C	100	200
Z 000 166 225	E	100	250
Z 000 166 227	F	100	300
Z 000 166 218	H	150	100
Z 000 166 219	D	150	150
Z 000 166 223	C	150	200
Z 000 166 226	E	150	250
Z 000 166 228	F	150	300
Z 000 166 224	H	200	100



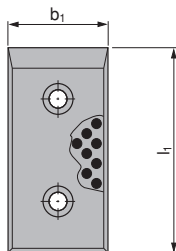
Material :
Bronze with Non-Liquid Lubricant
HB ≥ 190

Direction of Motion

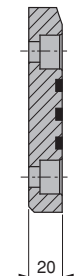
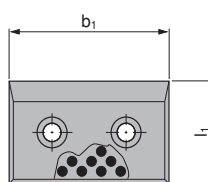


*Not in accordance with VDI3357

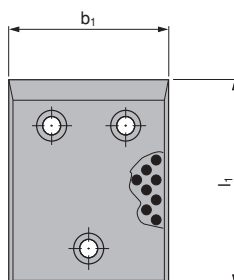
Form - A



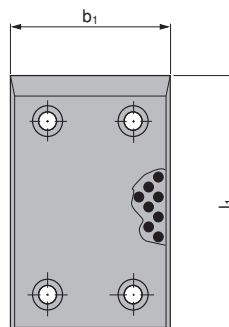
Form - C



Form - B



Form - D



PSA CODE:E24.52.504.G

Code	Form	b ₁	l ₁
N 001 337 331	A	50	80
N 001 275 075	A	50	100
N 001 275 076	A	50	125
N 001 275 095	A	50	160
N 001 275 096	A	50	200
N 001 334 791	C	80	50
N 001 337 333	A	80	80
N 001 275 115	A	80	100
N 001 275 135	A	80	125
N 001 275 136	A	80	160
N 001 275 137	A	80	200
N 001 275 138	C	100	50
N 001 275 139	C	100	80
N 001 275 155	A	100	100
N 001 275 156	A	100	125
N 001 275 175	A	100	160
N 001 275 176	A	100	200
N 001 275 436*	D	100	250
N 001 275 195	C	125	80
N 001 275 215	B	125	100
N 001 275 235	B	125	125

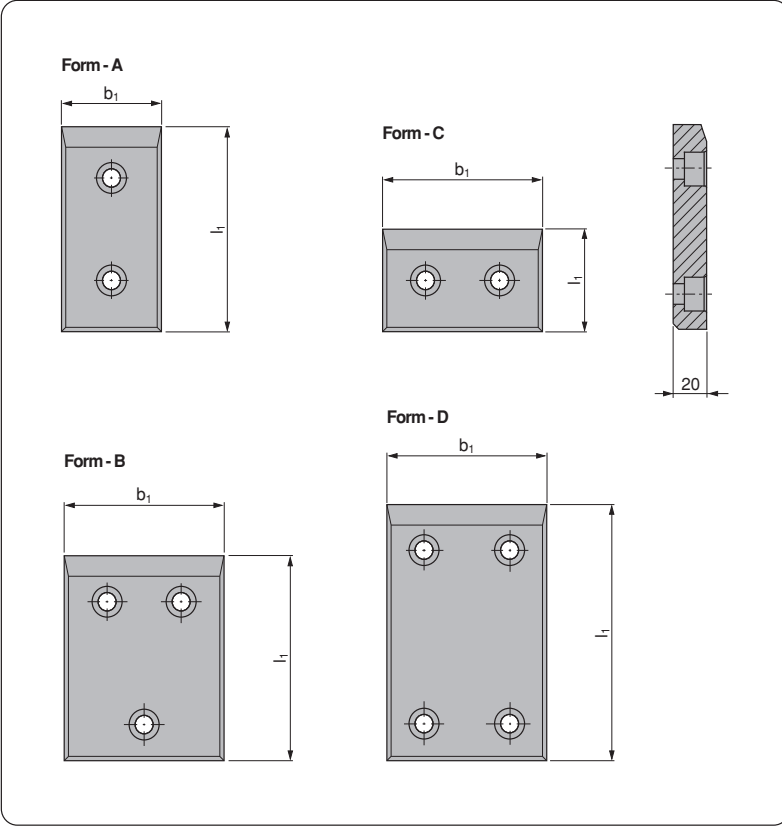
Code	Form	b ₁	l ₁
N 001 275 236	B	125	160
N 001 275 255	B	125	200
N 001 275 256	B	160	100
N 001 275 257	B	160	125
N 001 275 295	B	160	160
N 001 275 437*	D	160	200
N 001 275 438*	D	160	250
N 001 275 278*	D	160	300



Material :
16MnCr5
Hardened
HRC 58 ÷ 60

Direction of Motion

*Not in accordance with VDI3357



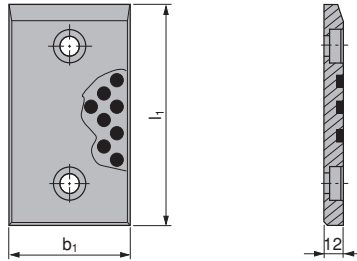
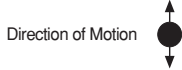
PSA CODE:E24.52.504.G

Code	Form	b ₁	l ₁
N 001 337 327	A	50	80
N 001 275 495	A	50	100
N 001 275 496	A	50	125
N 001 275 497	A	50	160
N 001 275 515	A	50	200
N 001 334 794	C	80	50
N 001 337 329	A	80	80
N 001 275 535	A	80	100
N 001 275 536	A	80	125
N 001 275 537	A	80	160
N 001 275 555	A	80	200
N 001 275 575	C	100	50
N 001 275 595	C	100	80
N 001 275 615	A	100	100
N 001 275 616	A	100	125
N 001 275 617	A	100	160
N 001 275 618	A	100	200
N 001 276 057*	D	100	250
N 001 275 635	C	125	80
N 001 275 655	B	125	100
N 001 275 656	B	125	125

Code	Form	b ₁	l ₁
N 001 275 675	B	125	160
N 001 275 676	B	125	200
N 001 275 677	B	160	100
N 001 275 695	B	160	125
N 001 275 696	B	160	160
N 001 276 058*	D	160	200
N 001 276 059*	D	160	250
N 001 275 735*	D	160	300

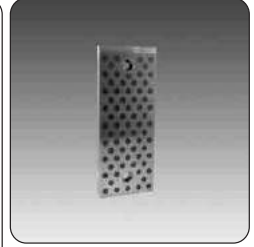
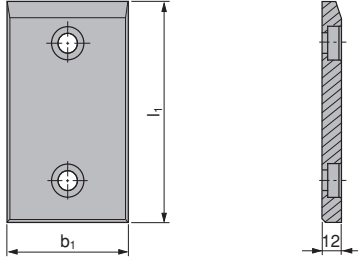


Material :
Bronze with Non-Liquid Lubricant
HB ≥ 190



PSA CODE: E24.52.504.G

Code	b ₁	l ₁
N 001 276 835	30	80
N 001 276 896	30	100
N 001 276 936	30	125
N 001 276 941	30	160
N 001 278 396	30	200
N 001 276 836	40	80
N 001 276 897	40	100
N 001 276 937	40	125
N 001 278 315	40	160
N 001 278 415	40	200
N 001 276 855	50	80
N 001 276 915	50	100
N 001 276 938	50	125
N 001 278 335	50	160
N 001 278 435	50	200
N 001 276 875	60	80
N 001 276 916	60	100
N 001 276 939	60	125
N 001 278 355	60	160
N 001 278 455	60	200
N 001 276 895	80	80
N 001 276 935	80	100
N 001 276 940	80	125
N 001 278 375	80	160
N 001 278 475	80	200



Material :
16MnCr5
Hardened
HRC 58 ÷ 60

Direction of Motion

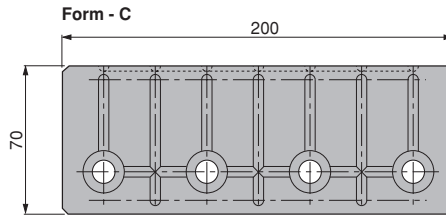
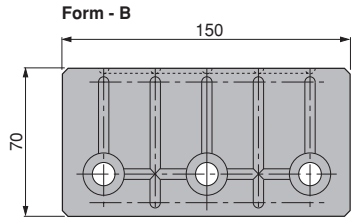
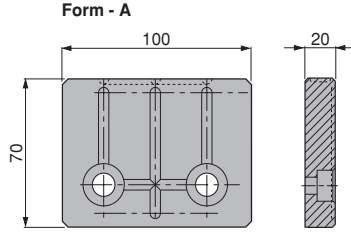


PSA CODE: E24.52.504.G

Code	b ₁	l ₁
N 001 278 535	30	80
N 001 278 635	30	100
N 001 278 895	30	125
N 001 279 015	30	160
N 001 279 057	30	200
N 001 278 555	40	80
N 001 278 655	40	100
N 001 278 915	40	125
N 001 279 035	40	160
N 001 279 075	40	200
N 001 278 575	50	80
N 001 278 815	50	100
N 001 278 935	50	125
N 001 279 036	50	160
N 001 279 076	50	200
N 001 278 595	60	80
N 001 278 855	60	100
N 001 278 936	60	125
N 001 279 055	60	160
N 001 279 095	60	200
N 001 278 615	80	80
N 001 278 875	80	100
N 001 278 997	80	125
N 001 279 056	80	160
N 001 279 115	80	200



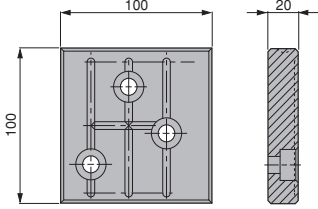
Material :
X38CrMoV5-1 T6 / T8-2
Hardened
HRC : 52 -54



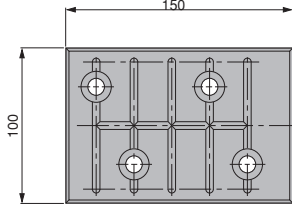
PSA CODE: E24.52.512.G

PSA Code	Form
G 859 220 071	A
G 859 220 072	B
G 859 220 073	C

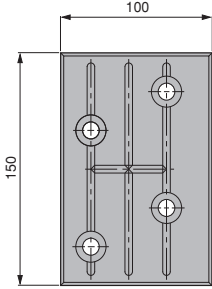
Form - A



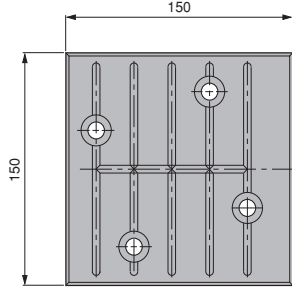
Form - B



Form - C



Form - D



Material :
X38CrMoV5-1 T6 / T8-2
Hardened
HRC : 52 -54

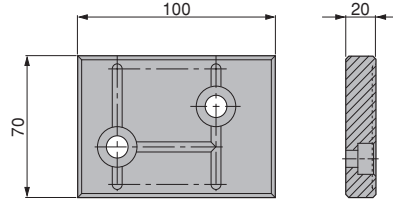
PSA CODE: E24.52.512.G

PSA Code	Form
G 859 220 043	B
G 859 220 044	A
G 859 220 047	D
G 859 220 048	C

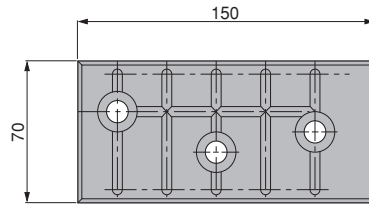


Material :
 X38CrMoV5-1 T6 / T8-2
 Hardened
 HRC : 52 -54

Form - A

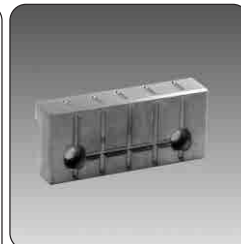
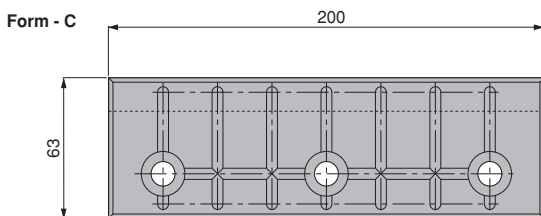
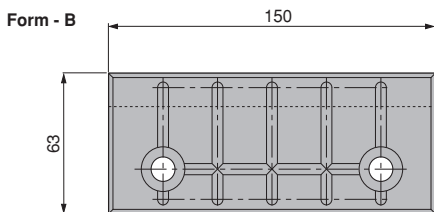
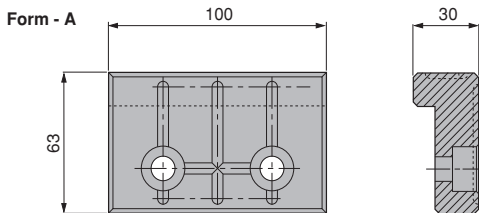


Form - B



PSA CODE:E24.52.512.G

PSA Code	Form
G 859 220 051	B
G 859 220 052	A



Material :
 X38CrMoV5-1 T6 / T8-2
 Hardened
 HRC : 52 -54

PSA CODE:E24.52.512.G

PSA Code

Form

G 859 220 053

A

G 859 220 054

B

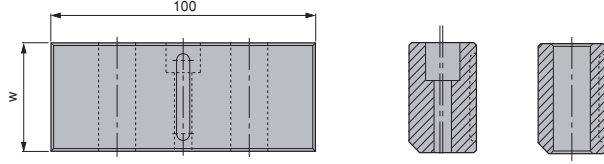
G 859 220 055

C

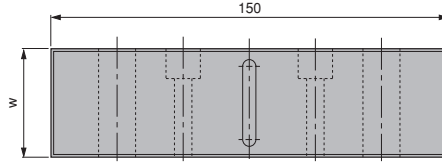


Material :
X38CrMoV5-1 T6 / T8-2
Hardened
HRC : 52 - 54

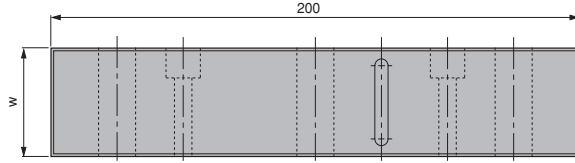
Form - A



Form - B



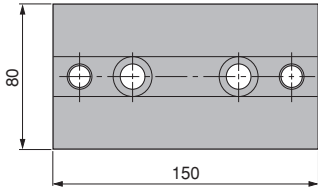
Form - C



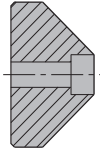
PSA CODE: E24.52.512.G

PSA Code	Form	w
G 859 220 065	A	40
G 859 220 066	B	40
G 859 220 067	C	40
G 859 220 059	A	65
G 859 220 060	B	65
G 859 220 061	C	65

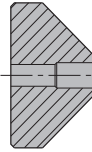
Form - A



Screw Holes

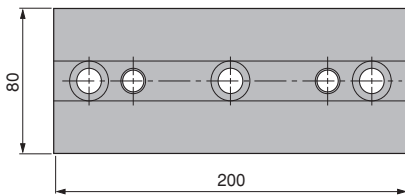


Pin Holes



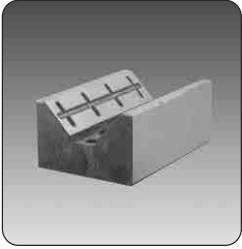
Material :
 X38CrMoV5-1 T6 / T8-2
 Hardened
 HRC : 52 -54

Form - B



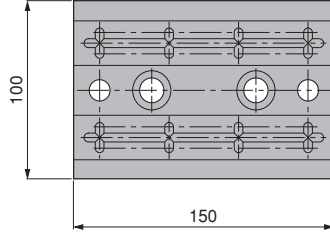
PSA CODE: E24.52.512.G

PSA Code	Form
G 859 220 134	A
G 859 220 135	B

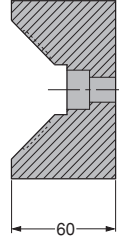


Material :
X38CrMoV5-1 T6 / T8-2
Hardened
HRC : 52 - 54

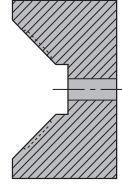
Form - A



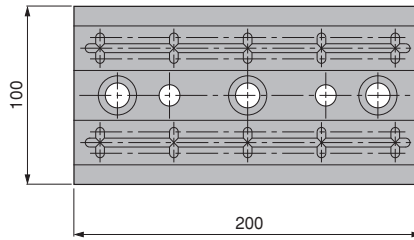
Screw Holes



Pin Holes



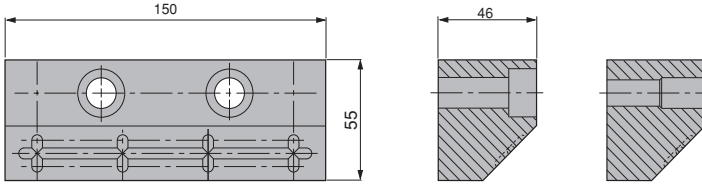
Form - B



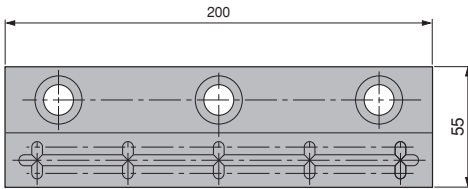
PSA CODE:E24.52.512.G

PSA Code	Form
G 859 220 138	A
G 859 220 139	B

Form - A



Form - B



Material :
 X38CrMoV5-1 T6 / T8-2
 Hardened
 HRC : 52 -54

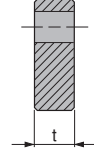
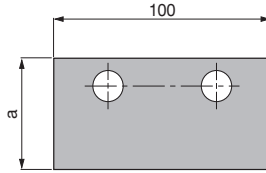
PSA CODE: E24.52.512.G

PSA Code	Form
G 859 220 146	A
G 859 220 147	B

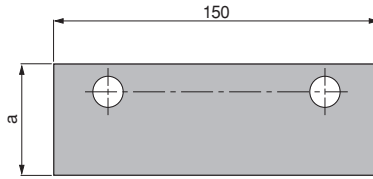


Material :
18NiCr5-4 T8.1
Hardened
HRC 59 ± 61

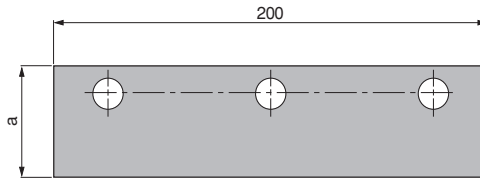
Form - A



Form - B



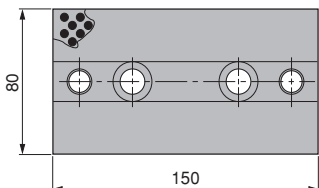
Form - C



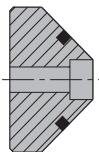
PSA CODE: E24.52.512.G

PSA Code	Form	a	t
Z 000 199 563	A	50	15
Z 000 199 567	B	50	15
Z 000 199 573	C	50	15
Z 000 199 564	A	70	25
Z 000 199 571	B	70	25
Z 000 199 575	C	70	25

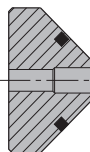
Form - A



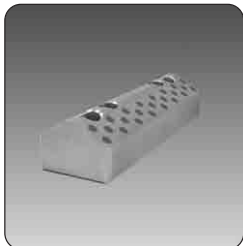
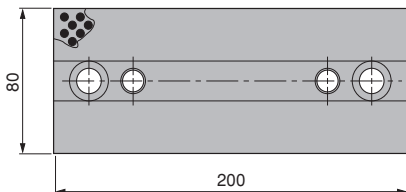
Screw Holes



Pin Holes



Form - B



Material :
Bronze with Non-Liquid Lubricant
HB ≥ 190

Direction of Motion ← ● →

PSA CODE: E24.52.535.G

PSA Code	Form
----------	------

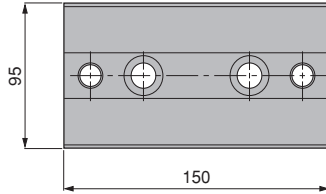
G 859 220 122	A
---------------	---

G 859 220 123	B
---------------	---

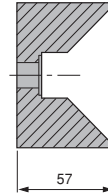


Material :
18NiCr5-4 T8
Hardened
HRC 58 - 60

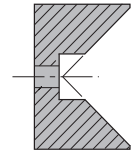
Form - A



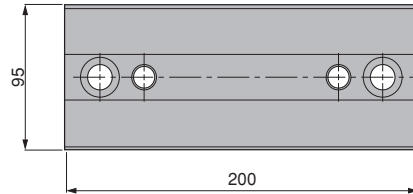
Screw Holes



Pin Holes



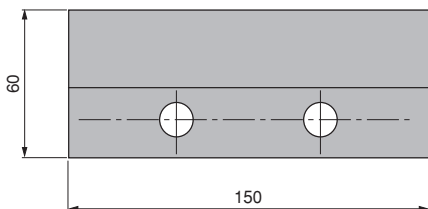
Form - B



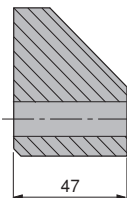
PSA CODE:E24.52.535.G

PSA Code	Form
G 859 220 100	A
G 859 220 101	B

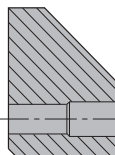
Form - A



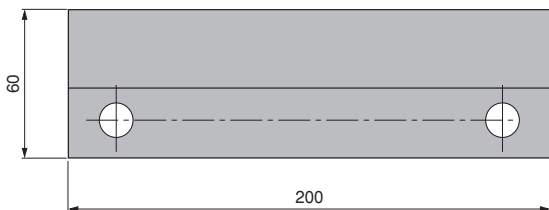
Screw Holes



Pin Holes



Form - B



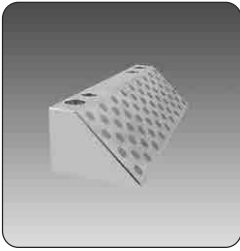
Material :
 18NiCr5-4 T8
 Hardened
 HRC 58 - 60

PSA CODE:E24.52.535.G

PSA Code Form

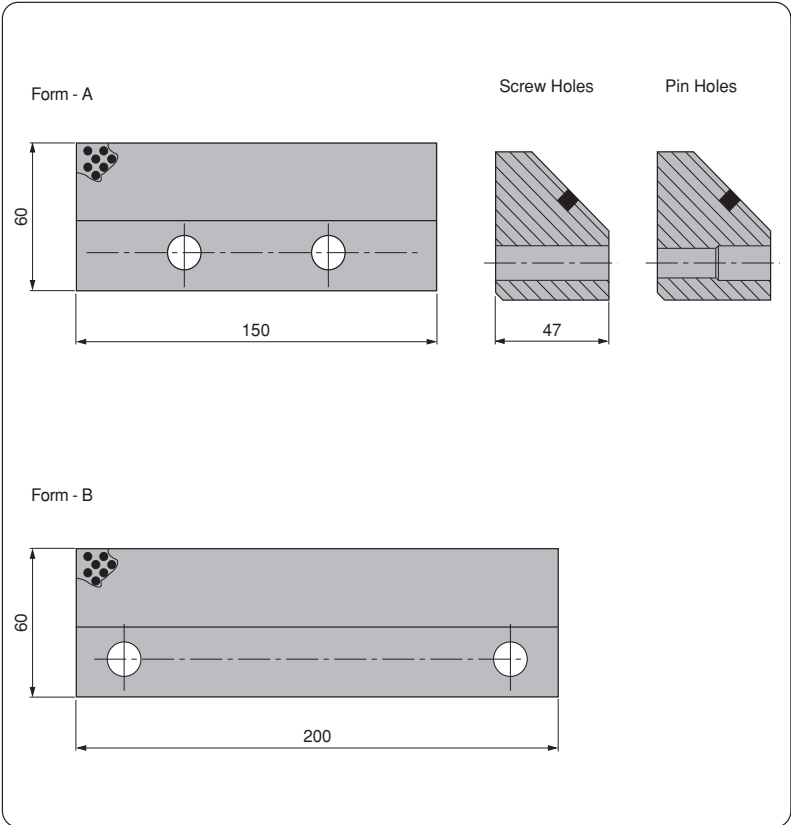
G 859 220 108 A

G 859 220 109 B



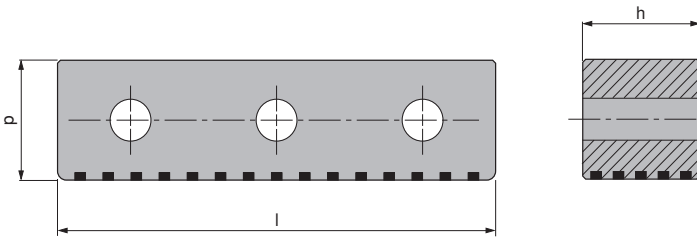
Material :
 Bronze with Non-Liquid Lubricant
 HB ≥ 190

Direction of Motion



PSA CODE: E24.52.535.G

PSA Code	Form
G 859 220 130	A
G 859 220 131	B



Material :
Bronze with Non-Liquid Lubricant
HB ≥ 190

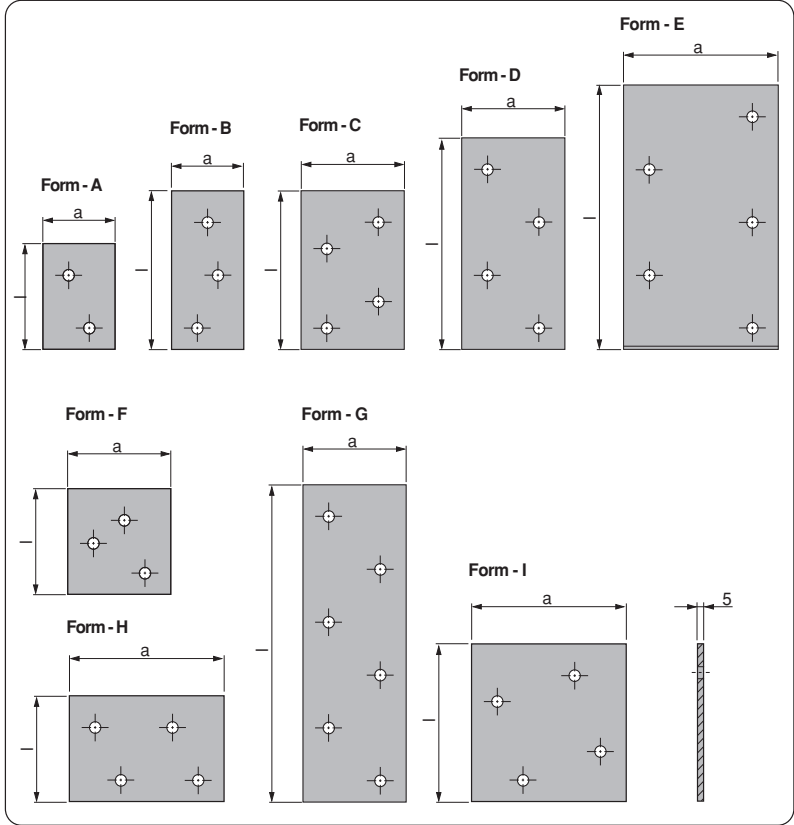
Direction of Motion ← ● →

PSA CODE: E24.52.535.G

PSA Code	l	p	h
Z 000 499 609	150	50	60
Z 000 499 610	200	50	60
N 000 467 312	150	40	40
N 000 467 313	200	40	40

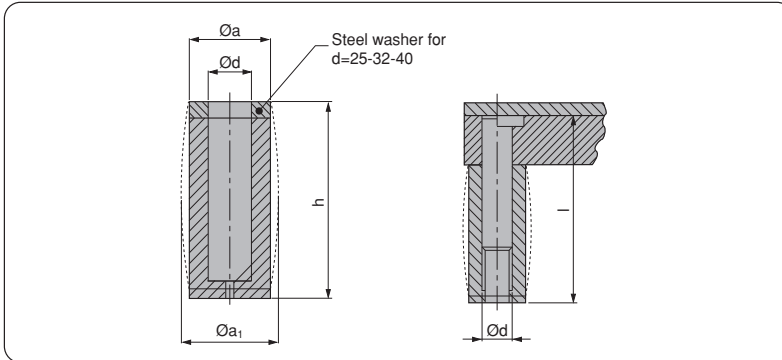


Material :
St 37



PSA CODE:E24.52.540.G

PSA Code	Form	a	l
P446 935 710	A	70	100
P446 935 711	B	70	150
P446 935 712	D	70	200
P446 935 713	F	100	100
P446 935 714	C	100	150
P446 935 715	D	100	200
P446 935 716	E	100	250
P446 935 717	G	100	300
P446 935 718	H	150	100
P446 935 719	I	150	150
P446 935 720	D	150	200
P446 935 721	E	150	250
P446 935 722	G	150	300
P446 935 723	I	200	100

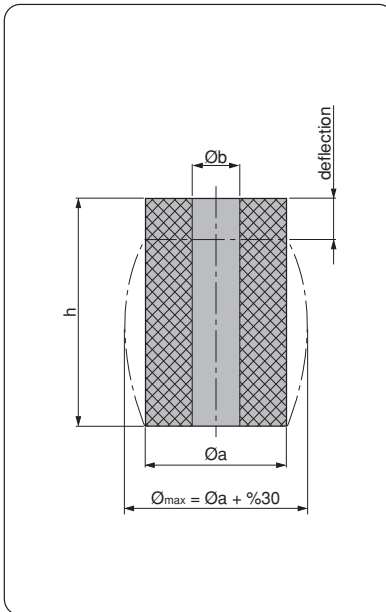


Material :
Urelast 90 Shore A

PSA CODE:E24.53.920.G

PSA Code	d	l	a	h
P399 341 508	8	71	21	48,5
P399 341 503	10	71	23	48,5
P399 341 504	13	71	26	48,5
P399 341 505	16	71	30	48,5
P399 341 506	20	71	38	48,5
Z000 173 577	25	71	48	48,5
Z000 166 048	32	71	55	48,5
Z000 166 049	40	71	63	48,5

PSA Code	a	b	h
X 346 552 172	16	6,5	20
X 346 552 171	16	6,5	25
X 346 552 670	20	8,5	25
X 346 552 671	20	8,5	32
Z 000 163 267	25	10,5	20
X 346 553 173	25	10,5	32
Z 000 163 268	32	13,5	40
Z 000 163 783	40	13,5	32
X 346 553 871	40	13,5	63
X 346 554 700	50	17	40
X 346 554 772	50	17	50
X 346 554 770	50	17	80
X 346 554 703	50	17	100
Z 000 163 269	63	17	40
Z 000 163 270	63	17	50
X 346 555 572	80	21	50
Z 000 163 271	80	21	100
X 346 555 570	80	21	125
X 346 555 372	100	21	80
X 346 555 373	100	21	100
X 346 555 578	100	21	125
Z 000 163 272	125	27	100
X 346 556 305	125	27	160

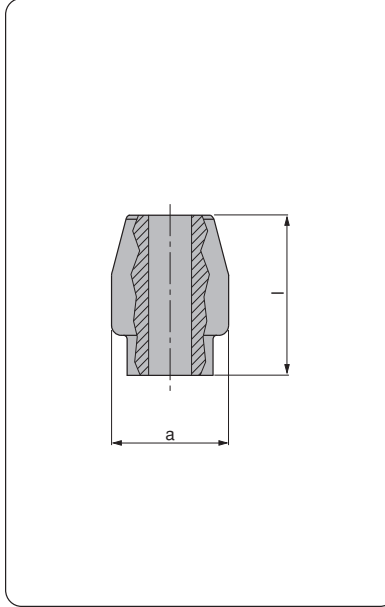


Material :
Polyurethane 90 Shore A

PSA CODE:E24.54.410.G



Material :
CK45

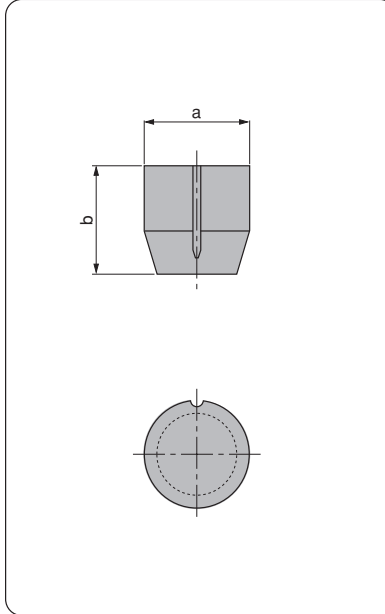


PSA Code	a	l
G 859 699 010	25	35
G 859 699 005	30	40
G 859 699 002	38	42

PSA CODE:E24.54.410.G



Material :
Polyurethane 90 Sh

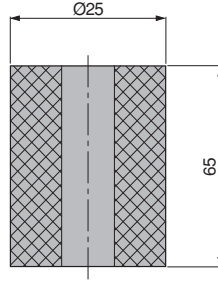


PSA Code	a	b
P399 341 500	6	9,5
P399 341 501	10	15,5
P399 341 502	16	25
P399 341 700	24	25

PSA CODE:E24.54.420.G

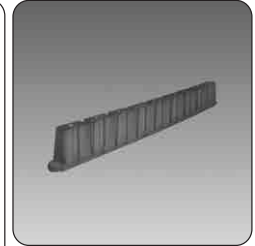
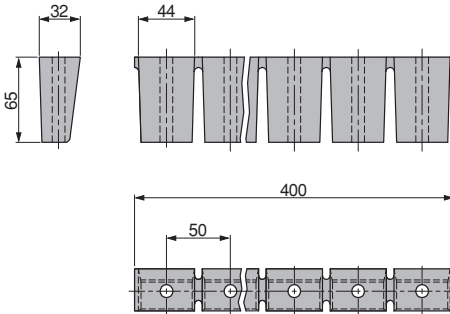
PSA Code

Z 000 151 239



Material :
Polyurethane 92 Sh

PSA CODE:E24.54.445.G



Material :
Polyurethane 92 Sh

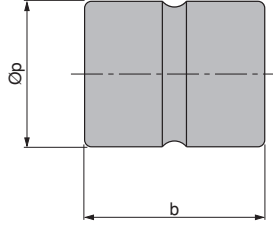
PSA Code

X 346 538 770

PSA CODE:E24.54.445.G



Material :
Polyurethane 92 Sh

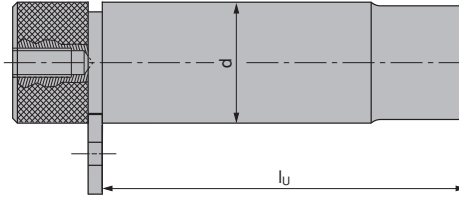


PSA Code	b	p
Z 000 404 675	45	25
Z 000 404 676	50	32
X 346 563 970	60	40
Z 000 404 677	70	50
X 346 564 970	80	63
Z 000 404 678	90	80

PSA CODE:E24.55.265.G

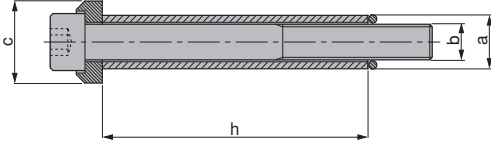


Material :
CK45



PSA CODE:E24.55.265.G

PSA Code	lu	d
Z 000 400 337 81		20
Z 000 400 338 81		25
Z 000 400 339 98		25
Z 000 400 487 103		32
Z 000 400 342 148		32
Z 000 400 345 132		40
Z 000 400 346 192		40
Z 000 400 349 165		50
Z 000 400 350 220		50
Z 000 400 353 210		63
Z 000 400 354 250		63
Z 000 424 846 210		80



Material :
Screw Steel class ISO 12.9 DIN 912

Washer
Hardened and tempered steel,
not ground

Tensile Strength
Rm = 100 Kg/mm²

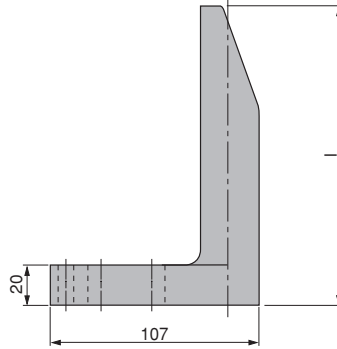
Sleeve
Hardened, tempered and ground
steel

Tensile Strength
Rm = 120 -140 Kg/mm²

PSA Code	a	b	c	h
Z 000 213 160	12,5	M8	20	45
Z 000 213 268	12,5	M8	20	60
Z 000 213 161	15	M10	25	45
Z 000 213 162	15	M10	25	70
Z 000 213 163	17,5	M12	25	50
Z 000 213 166	17,5	M12	25	70
Z 000 213 167	23	M16	32	60
Z 000 213 168	23	M16	32	70
Z 000 213 169	23	M16	32	80

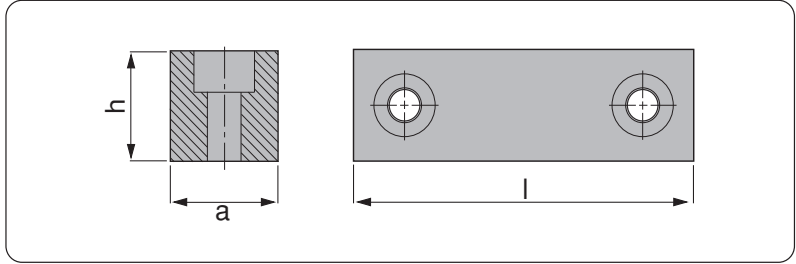
PSA CODE:E24.55.410.G

PSA Code	l
N 000 445 400	65
N 000 445 401	90
N 000 445 402	120
N 000 445 403	150
N 000 445 404	180
N 000 445 405	250



Material :
CK45
Hardened
HRC 58 ÷ 60
Forged

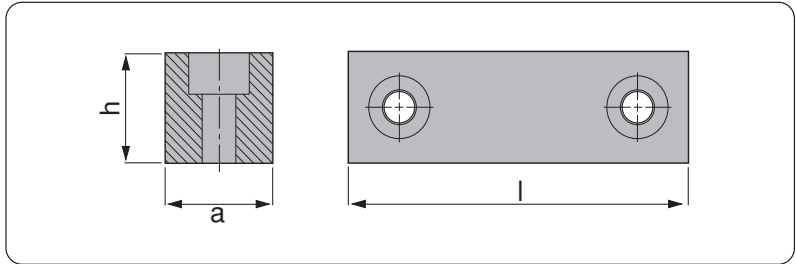
PSA CODE:E24.56.200.G



Material :
CK45

PSA Code	a	h	l
J 859 623 004	25	25	75
J 859 623 014	32	32	75

PSA CODE:E24.56.630.G

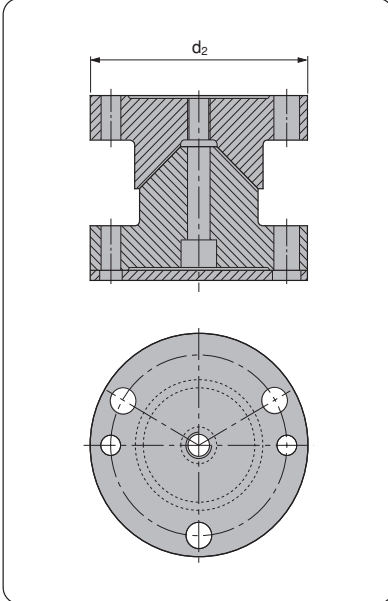


Material :
16MnCr5
Hardened
HRC 60 + 62

PSA Code	a	h	l
N 001 327 511	45 h6	45	100
N 001 327 512	45 h6	45	200

PSA CODE:E24.56.630.G

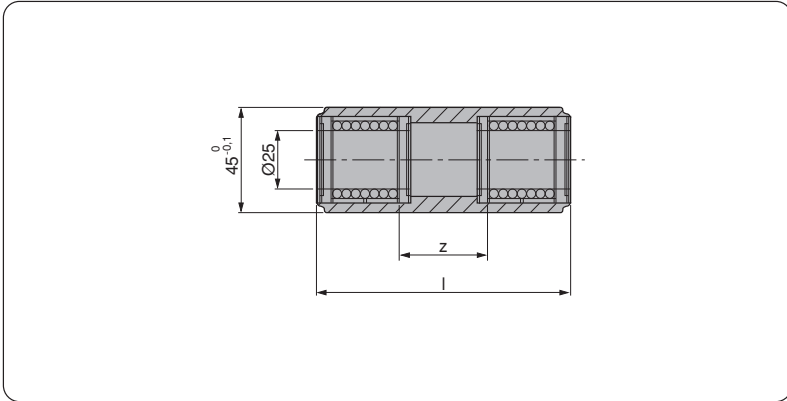
PSA Code	d ₂
Z 000 400 139	90
Z 000 400 140	110



Material :
Locating Cone
X155CrMoV12 T6
Hardened
HRc :56 - 58

Adjusting Washer
100Cr6

PSA CODE:E24.56.700.G



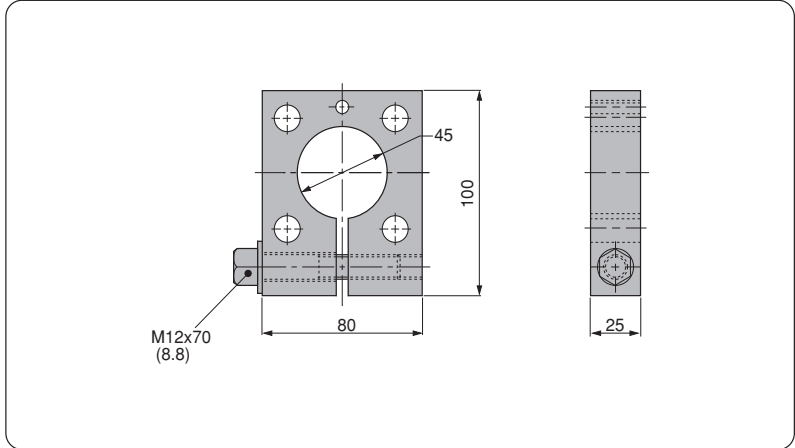
Material :
Steel

PSA Code	l	z
P 446 905 005	112	32
P 446 905 006	200	120

PSA CODE:E24.57.370.G



Material :
CK45



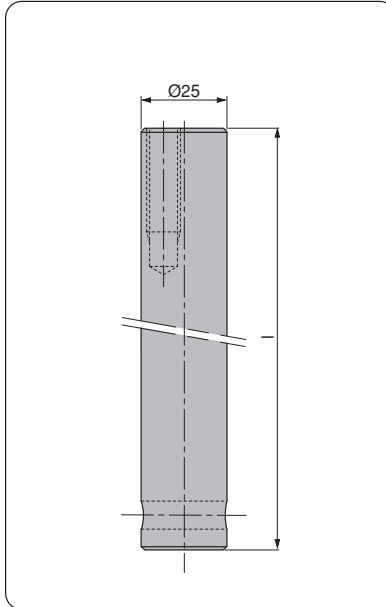
PSA Code

P 446 932 718

PSA CODE:E24.57.370.G



Material :
16MnCr5
Hardened
HRC 60 ÷ 62



PSA Code

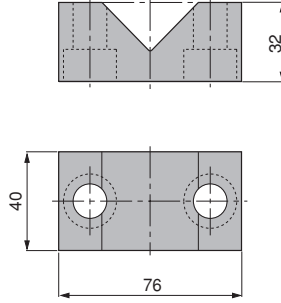
l

P 446 940 700	265
P 446 940 701	350
P 446 940 702	400
P 446 940 703	450
P 446 940 704	500

PSA CODE:E24.57.370.G

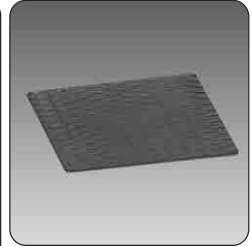
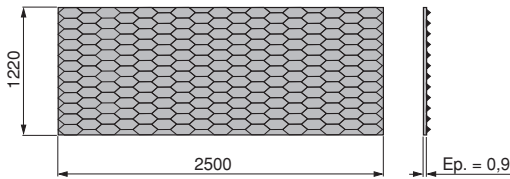
PSA Code

P 446 928 700



Material :
CK45

PSA CODE:E24.57.370.G

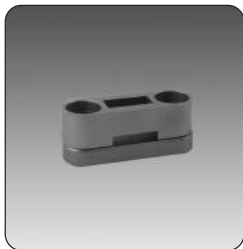


Material :
Stainless Steel

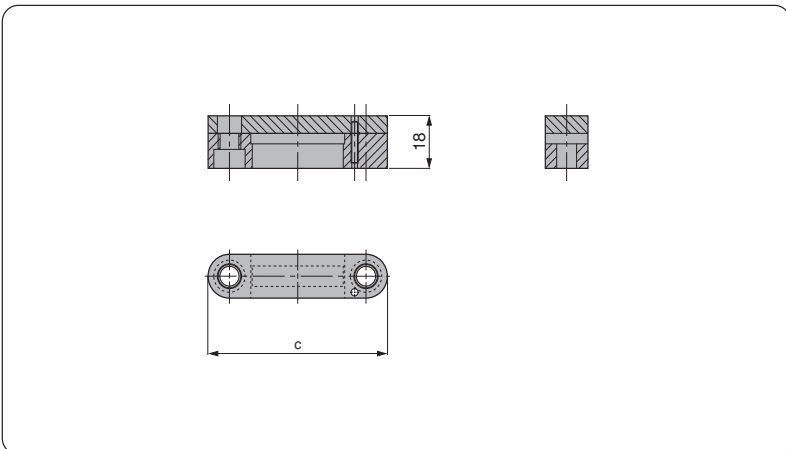
PSA Code

Z 000 166 439

PSA CODE:E24.57.900.G

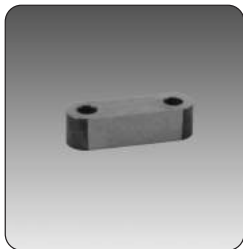


Material :
CK45

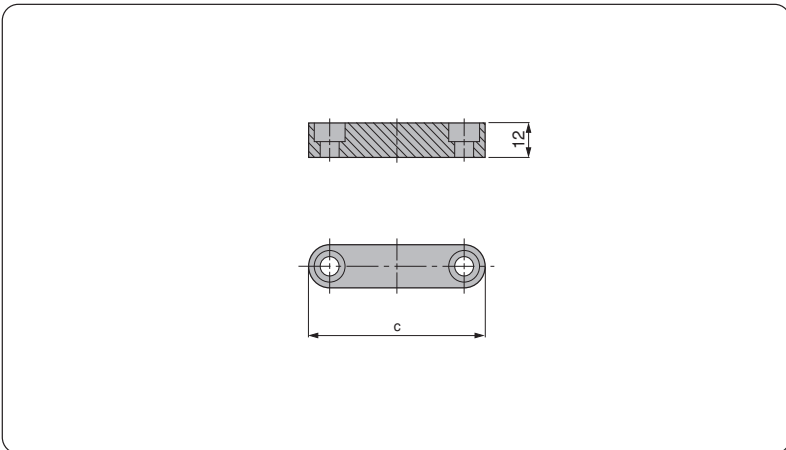


PSA Code	c	Number of Punch
P 399 391 701	47	4
N 000 467 867	55	6
P 399 391 702	63	8
P 399 391 703	71	10

PSA CODE:E24.64.100.G



Material :
CK45

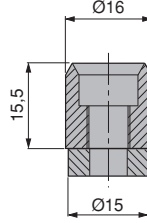


PSA Code	c	Number of Punch
Z 000 151 091	47	4
N 000 467 866	56	6
Z 000 151 092	63	8
Z 000 151 093	71	10

PSA CODE:E24.64.100.G

PSA Code

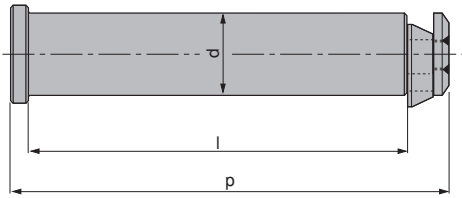
P785 283 005



Material :
X153CrMoV12 T6
Hardened
HRC : 58 - 60

Washer
Material :
CK45

PSA CODE:E24.64.105.G



Material :
St 52

WARNING !

For safety reasons, the weight of the tool has to be supported by just two lifting pins.
Respect the max load

UYARI !

Güvenlik nedeniyle kalıp ağırlığı iki adet taşıma piminin taşıyabileceği maksimum yük miktarını aşmamalıdır.
Maksimum yükü göz ardı etmeyiniz

ACHTUNG !

Aus Sicherheitsgründen achten Sie immer dass zwei Tragbolzen das gesamte Werkzeugs gewicht tragen müssen.
Maximale Nutzlast beachten

PSA Code	Max. Load (Kg)	Max. Die Weight (Kg)	d	l	p
P 953 254 770	6000	12000	32	132	154
P 953 255 870	9000	18000	40	170	197,75
P 953 256 670	14000	28000	50	212	247,50
P 953 257 470	22500	45000	63	265	309

PSA CODE:E24.65.000.G

