



Other Components
Diğer Malzemeler
Andere Komponenten

1

INDEX
İNDEKS
STICHWORTVERZEICHNIS

2

LIFTING ELEMENTS
TAŞIMA ELEMANLARI
TRAGELEMENTE

3

GUIDE ELEMENTS
KILAVUZ ELEMANLARI
FÜHRUNGSELEMENTE

4

DIE COMPONENTS
KALIP ELEMANLARI
NORMALIEN

5

BMW STANDARDS
BMW STANDARTLARI
BMW NORMALIEN

6

FCA STANDARDS
FCA STANDARTLARI
FCA NORMALIEN

7

FORD STANDARDS
FORD STANDARTLARI
FORD NORMALIEN

8

MERCEDES-BENZ STANDARDS
MERCEDES-BENZ STANDARTLARI
MERCEDES-BENZ NORMALIEN

9

OPEL STANDARDS
OPEL STANDARTLARI
OPEL NORMALIEN

10

PSA STANDARDS
PSA STANDARTLARI
PSA NORMALIEN

11

RENAULT STANDARDS
RENAULT STANDARTLARI
RENAULT NORMALIEN

12

VW - AUDI STANDARDS
VW - AUDI STANDARTLARI
VW - AUDI NORMALIEN

13

SPRINGS
YAYLAR
FEDERN

14

OTHER COMPONENTS
DİĞER MALZEMELER
ANDERE KOMPONENTE

15

TECHNICAL DATA
TEKNİK BİLGİ
TECHNISCHE INFORMATIONEN

Index

Contents	Page	Contents	Page
 <p>Z000166439 Stainless Steel Embossed Sheet Kabartmalı Çapak Kaydırma Plakası Geprägt Scheibe</p>	14.5	 <p>A103-04 (h6) Dowel Pin Parallel DIN EN ISO 8734 Düz Tespit Pimleri DIN EN ISO 8734 Führungssaulen DIN EN ISO 8734</p>	14.10
 <p>BW 100 Milling Machine for Model Making Mills Rigid Foams Strafor İşleme Pah Kırma Seti Fräsmaschinen set</p>	14.6		
 <p>BW 500 Hollow Cutter Strafor İşleme Takımı Fräser</p>	14.7		
 <p>D901-01-745 Dressing Paste For Surface Control Kalıp Aıştırma Boyası Retuschierfarbe</p>	14.8		
 <p>A103-01 (m6) Dowel Pin with Thread DIN EN ISO 8735 Çektirmeli Pimler DIN EN ISO 8735 Führungssaulen DIN EN ISO 8735</p>	14.9		
 <p>A103-02 (h6) Dowel Pin with Thread DIN EN ISO 8735 Çektirmeli Pimler DIN EN ISO 8735 Führungssaulen DIN EN ISO 8735</p>	14.9		
 <p>A103-03 (m6) Dowel Pin Parallel DIN EN ISO 8734 Düz Tespit Pimleri DIN EN ISO 8734 Führungssaulen DIN EN ISO 8734</p>	14.10		



Index

Contents	Page	Contents	Page



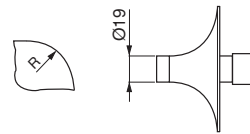
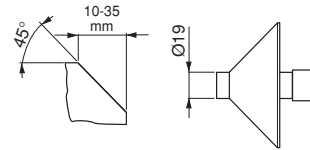
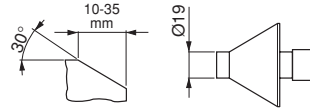
Material :
90Mn4
HRC 36 ÷ 40

Sleeve 1.7220 (34CrMo4)

Black oxide finish.

Technical Data

Order Code	BW 100-230V
Voltage	230 V
Frequency	50-60 Hz
Speed	4500 min ⁻¹
Case with insertion weight	1,4 Kg
Total weight	3,4 Kg
Dimension handbag	420x350x98 mm

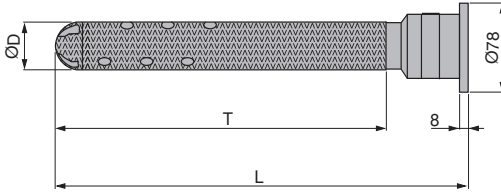


GSB CODE:BW 100

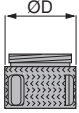
Code	Description	Weight Kg
BW 100-230V	APOLLO 2 - modelling-set, complete, 17 parts, scope see underneath 230 V, 50 Hz	4,900
	BW 500.460 - drive incl. 2 socket wrenches	1,460
	BW 500.461 - case with insertion	1,460
	BW 500.465 - chamfering cutter 45°	0,310
	BW 500.466 - chamfering cutter 30°	0,310
	BW 500.467 - rounding-off cutter R 10	0,160
	BW 500.468 - rounding-off cutter R 15	0,200
	BW 500.469 - rounding-off cutter R 20	0,230
	BW 500.470 - rounding-off cutter R 25	0,270
	BW 500.471 - depth limit H 10	0,090
	BW 500.472 - depth limit H 15	0,080
	BW 500.473 - depth limit H 20	0,070
	BW 500.474 - depth limit H 25	0,060
	BW 500.475 - depth limit H 30	0,050
	BW 500.476 - depth limit H 35	0,030
	BW 500.477 - connection piece	0,070
	BW 500.039 - suction tube (optional) Ø25 mm x 5 m	1,000

Benefits:

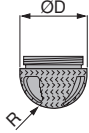
- For fine and accurate milling results
- For rapid chamfering and grinding of model edges
- Six different milling cutters are permanently available
- Compatible APOLLO 2 extension sets for bore cutting and 3D-milling are also available
- APOLLO 2 with electronic revolution control adapts optimally to all materials
- APOLLO 2-milling cutters with super-long tool life due to BW-special hardening
- Convenient tool exchange



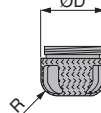
Form - W



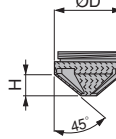
Form - X



Form - Y



Form - Z



Milling Materials
Hard, brittle, expanded plastics :
PS /XPS, PU

Semi-hard to viscous expanded
plastics:
PE, PPE / EPP, PU

and others

GSB CODE:BW 500

BW HOLLOW CUTTERS

Code	ØD	T	L
BW 500.200-__	15	120	190
BW 500.201-__	20	200	270
BW 500.207-__	20	250	320
BW 500.202-__	30	200	270
BW 500.208-__	30	250	320
BW 500.213-__	30	300	370
BW 500.218-__	30	350	420
BW 500.203-__	40	200	270
BW 500.209-__	40	250	320
BW 500.214-__	40	300	370
BW 500.221-__	40	350	420
BW 500.222-__	40	400	470
BW 500.397-__	40	450	520
BW 500.204-__	45	200	270
BW 500.210-__	45	250	320
BW 500.215-__	45	300	370
BW 500.219-__	45	350	420
BW 500.315-__	45	400	470
BW 500.384-__	45	450	520
BW 500.230-__	45	500	570
BW 500.205-__	50	200	270
BW 500.211-__	50	250	320
BW 500.216-__	50	300	370
BW 500.228-__	50	350	420
BW 500.295-__	50	400	470
BW 500.284-__	50	450	520
BW 500.280-__	50	500	570
BW 500.206-__	60	200	270
BW 500.212-__	60	250	320
BW 500.217-__	60	300	370
BW 500.220-__	60	350	420
BW 500.297-__	60	400	470
BW 500.282-__	60	450	520
BW 500.299-__	60	500	570
BW 500.276-__	60	600	670

HOLLOW CUTTER TIPS (Exchange tips)

Code	ØD
BW 500.430-15-__	15
BW 500.430-20-__	20
BW 500.430-25-__	25
BW 500.430-30-__	30
BW 500.430-40-__	40
BW 500.430-45-__	45
BW 500.430-50-__	50
BW 500.430-60-__	60

Order Example: (Hollow Cutters)

BW 500.Code-Form (R or H)

D=45, T=250 and Form=Y

Order Code: BW 500.210-YR10

Order Example: (Hollow Cutters Tips)

BW 500.430-D-Form

D=40, T=250, Form=Z, and H=25 mm

Order Code: BW 500.430-40-ZH25

Advantages :

Fast milling of patterns

Very good quality finishes

Provides high planning reliability ensuring quality products

Keep close tolerances

Continuous direct suction effectively removes chips internally through the hollow cutter by utilising a hollowshaft motor with a suction machine (suction milling)

Quickly exchangeable cutter tips

Special hardening guarantees a long service life

Dynamically balanced

Also available with integrated ISO or HSK adaptor



GSB Code	Colour	Lt.
D901-01-745	Blue	250 ml.

GSB CODE:D901-01-745

Physical and Chemical Properties

Physical State	Paste
Colour	Blue
Odour	Characteristic
Melting Point	45 °C
Flammability	> 150 °C
Explosiveness	not explosive
Density	0,85 g/ml
Solubility	In many solvents
Water Solubility (20°C)	Insoluble

Fiziksel ve Kimyasal Özellikler

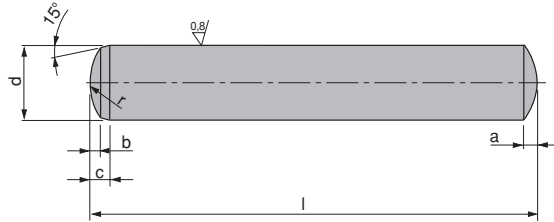
Fiziksel Durum	Pasta
Renk	Mavi
Koku	Karakteristik
Erime Noktası	45 °C
Yanma Derecesi	> 150 °C
Patlayıcılık	Patlayıcı özelliği yoktur
Yoğunluk	0,85 g/ml
Çözünürlük	Bir çok çözücüde çözünür
Suda Çözünme (20°C)	Suda çözünmez

Physische und Chemische Eigenschaften

Physischer Zustand	Paste
Farbe	Blau
Geruch	Karakteristik
Schmelzpunkt	45 °C
Endzündbarkeit	> 150 °C
Brisant	Keine
Dichte	0,85 g/ml
Lösbarkeit	Mit den meisten Lösungsmittel lösbar
Wasserlöslichkeit (20°C)	Keine



Material :
16MnCr5
HRC 60 ÷ 62
Depth ≥ 0,8



GSB CODE:A103-03 & A103-04

a	b	c	d	l													r	
0,9	0,6	1,5	6	20	25	30	35	40	45	50	55	60	70	80				6
1,2	0,8	2,0	8	20	25	30	35	40	45	50	55	60	70	80	90	100	120	8
1,5	1,0	2,5	10	20	25	30	35	40	45	50	55	60	70	80	90	100	120	10
1,8	1,3	3,0	12	20	25	30	35	40	45	50	55	60	70	80	90	100	120	12
2,0	1,3	3,5	14			30	35	40	45	50	55	60	70	80	90	100	120	14
2,5	1,7	4,0	16			30	35	40	45	50	55	60	70	80	90	100	120	16
3,0	2,0	5,0	20			30	35	40	45	50	55	60	70	80	90	100	120	20

Order Example:
d(dia.) for m6 tolerance;
A103-03- d - l
d=8, l=120
Order Code:A103-03-008-120

Order Example:
d(dia.) for h6 tolerance;
A103-04- d - l
d=8, l=120
Order Code:A103-04-008-120